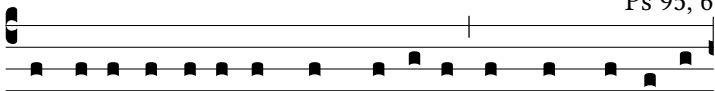


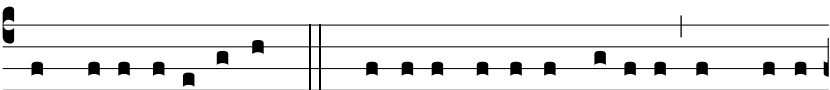
R. br.

**M**

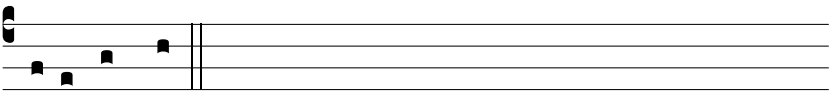
agni-fi-cénti- a et pulchri-túdo in conspéctu e-



ius, Ṛ. Al-le-lú-ia, alle-lú-ia. Ṿ. De-cor et pot-énti- a in



sanctu-á-ri- o e-ius. Ṿ. Glo-ri- a Patri, et Fí-li- o, et Spi-rí-



tu- i Sancto.