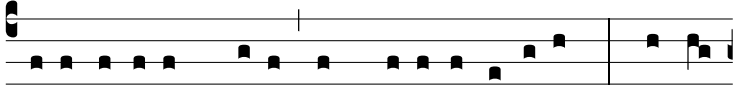
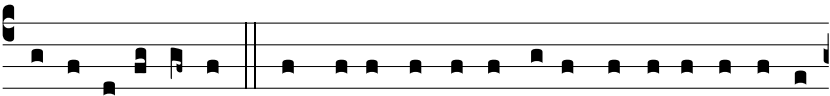


R. br.



**E** -lé-git é-am Dé-us, et præ-e-lé-git é-am. \* Al-le-



lú-ia, alle-lú-ia.  $\Psi$ . In taberná-cu-lo sú-o ha-bi-tá-re fá-cit



é-am.  $\Psi$ . Gló-ri-a Pátri et Fí-li-o, et Spi-rí-tu-i Sancto.