

R. br.

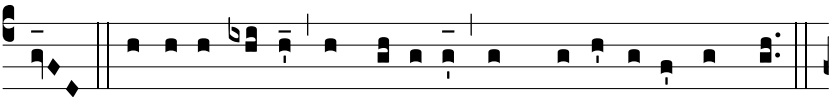


M

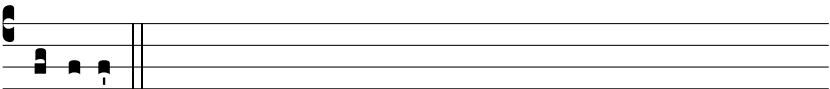
E-ri-tis et pré-ci-bus * Be-átae Jo-ánnæ. Mé-ri-



tis. Ψ . Pro-pí-ti-us esto, Dómi-ne, pópu-lo tu-o. Be-á-



tae. Gló-ri-a Patri, et Fí-li-o, et Spi-rí-tu-i Sancto.



Mé-ri-tis.