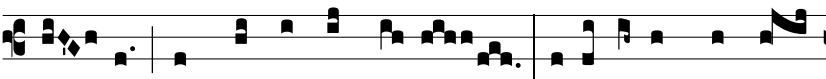


Intr.
2.

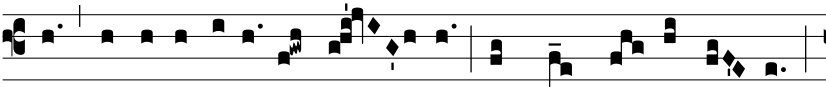
N



Arravé- runt * mi- hi in-í- qui fabu- la- ti-



ó- nes, sed non ut lex tu- a : ego autem loqué-



bar de testimóni- is tu- is in conspé-ctu re- gum,



et non confun-dé- bar. Al-le- lú- ia, alle- lú-



ia. Ps. Be- á- ti imma-cu- lá- ti in vi- a : * qui ámbu- lant



in lege Dómi- ni. Gló- ri- a Patri. E u o u a e.