

Ant.
3 a2.

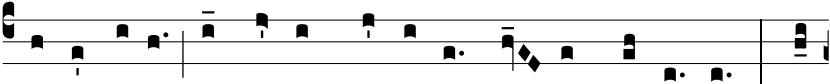


Q

Uando na-tus est * in-ef-fa-bí-li-ter ex Vírgi-ne,



tunc inplé-tæ sunt Scriptú-ræ : si-cut plú-vi-a in vellus



descendísti, ut salvum fá-ce-res ge-nus humá-num : te



laudámus De-us noster. E u o u a e.