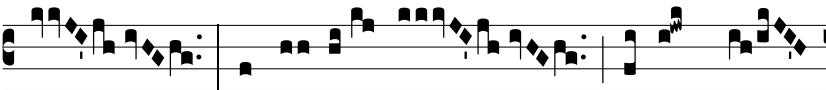


Grad.
7.

A



Udi, fi- li- a, * et vi- de,



et inclí- na aurem tu-



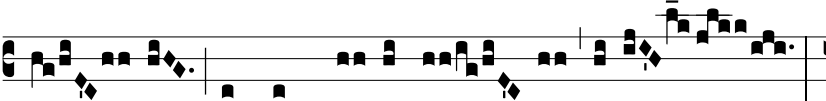
am : qui- a concu- pí- vit



rex spé- ci- em tu-



am. Ψ . Spé- ci- e



tu- a, et pulchri- tú- di- ne tu- a



inténde, próspe- re pro- cé- de,



* et re- gna.