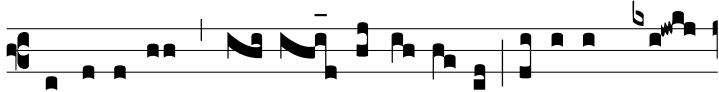


Intr.  
2.

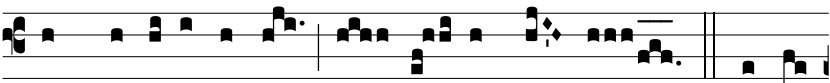


**M**

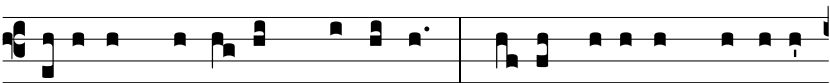
I-hi autem \* ab-sit glo-ri- á-ri, ni-si in cru-



ce Dómi-ni no-stri Je-su Chri-sti, per quem mi-hi mun-



cus cru-ci-fí-xus est, et e-go mun-do. *Ps. Vo-ce*



me-a ad Dómi-num clamá-vi: \* vo-ce me-a ad Dóminum



de-pre-cá-tus sum. Gló-ri-a Patri. E u o u a e.