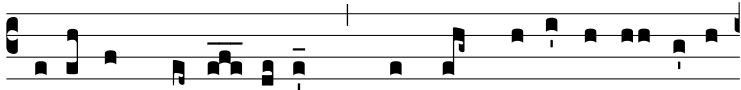
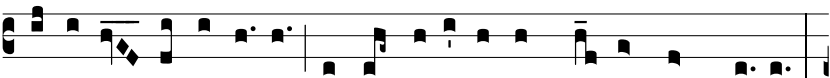


Ant.
8 g.

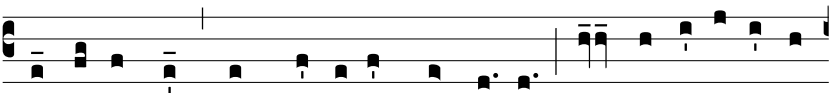
B



E-á-tus Laurén-ti-us, * dum in cra-tí-cu-la super



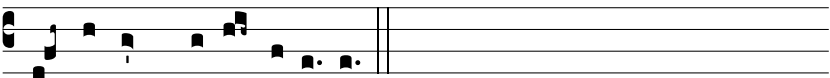
pó-si-tus u-re-ré-tur, ad impi-í-ssimum tý-rá-nnum di-xit :



Assá-tum est, jam versa et mandú-ca : nam fa-cultá-tes Ec-



clé-si-æ, quas requí-ris, in cæ-lé-stes thesáu-ros manus



páu-pe-rum depor-tavé-runt.