

R. br.
6.



H

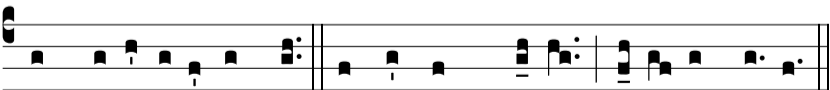
OC signum Cru-cis * E-rit in cæ-lo. Hoc signum



Cru-cis * E-rit in cæ-lo. Ψ . Cum Dóminus ad ju-di-cándum



véne-rit. * E-rit in cæ-lo. Ψ Gló-ri- a Patri, et Fí-li- o,



et Spi-rí-tu- i Sancto. Hoc signum Cru-cis * E-rit in cæ-lo.