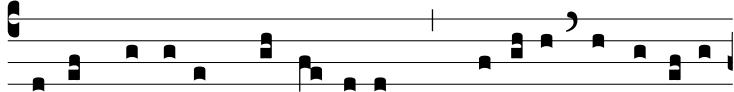


Ant.  
1 f.



**D**

I-xit Dóminus ma-tri su-æ : \* Mú-li-er, ecce fí-li-



us tu-us. Ad di-scí-pu-lum autem : † Ecce ma-ter tu-a.



*T.P.* † Ecce ma-ter tu-a, al-le-lu-ia. E u o u a e.