

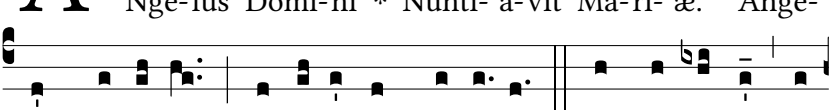
R. br.

6.

A



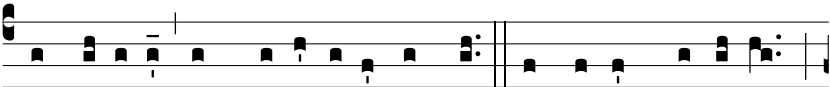
Nge-lus Dómi-ni * Nunti- á-vit Ma-rí- æ. Ange-



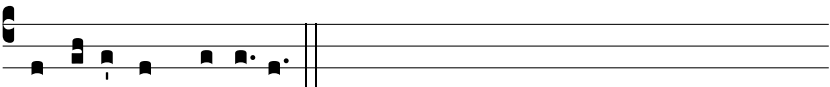
lus Dómi-ni * Nunti- á-vit Ma-rí- æ. Ψ . Et concé-pit de



Spí-ri-tu Sáncto. * Nunti- á-vit Ma-rí- æ. Ψ Gló-ri- a Patri,



et Fí-li- o, et Spi-rí-tu- i Sancto. Ange-lus Dómi-ni *



Nunti- á-vit Ma-rí- æ.