

Ant.
7 d.



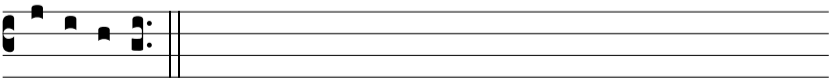
G Abri- el Ange-lus * locú-tus est Ma- rí-æ di-cens :



Ave grá-ti- a plena : Dóminus te-cum : bene-dícta tu † in



mu-li- é-ri-bus. *T. P.* † in mu-li- é-ri-bus, alle-lú-ia. E u



o u a e