

Tract.
2.

A



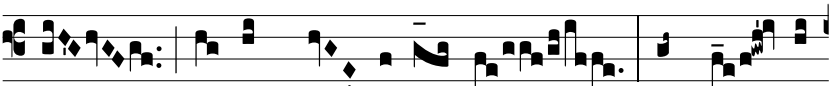
Nge-lis su- is * De- us mandá- vit



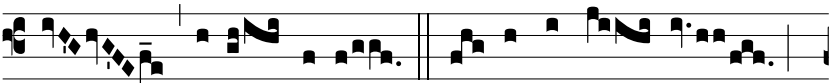
de te, ut custó-di- ant te in ómni- bus



vi- is tu- is. ∷ In má-ni- bus por- tá- bunt



te, ne unquam offén- das ad lá- pi-



dem pedem tu- um. ∷ Su- per áspi- dem



et ba-si- lís- cum ambu- lá-



bis, et conculcá- bis le- ó- nem * et dra-



có- nem.