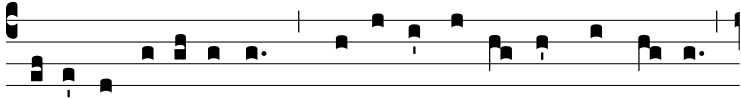
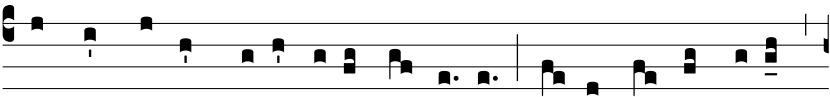


Ant.
3 a3.



P

Ræsul invictíssimus, * audí-to turbá-rum ímpe-tu,



ad sanctó-rum re-líqui-as confú-git, qui-bus corpus su-um



cæ-lésti clý-pe-o † mu-ní-vit*T. P.* † mu-ní-vit, al-le-lú-ia.