

Resp.

7.

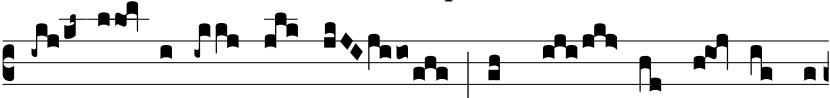
A



-ve, Ma-rí- a, grá-ti- a ple-na,



Dó- mi- nus te- cum. Spí- ri- tus Sanctus su-



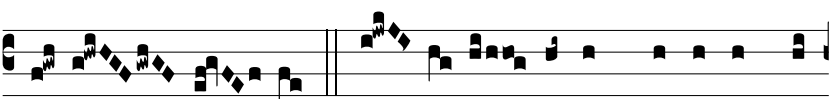
per- vé- ni- et in te, et vir- tus Al- tís- si-



mi obumbrá- bit ti- bi ; quod e- nim ex te



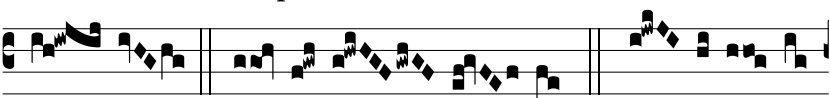
na- scé- tur Sanctum vo- cá- bi- tur * Fí-



li- us De- i. Ψ. Tól- li- te portas, prínci- pes, ves-



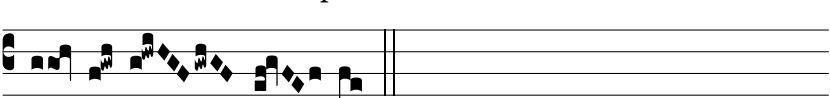
tras, et e- levámi- ni portæ æ- terná- les, et intro-



í- bit. * Fí- li- us De- i. Ψ. Gló- ri- a Pa-



tri, et Fí- li- o, et Spi- rí- tu- i Sanc- to. *



Fí- li- us De- i.