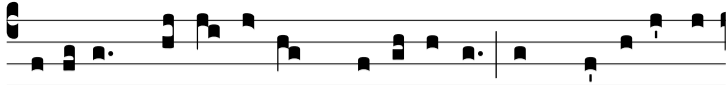


Ant.
8 g2.



H

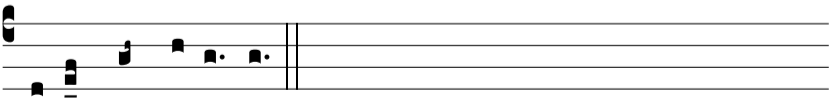
Odi-e * sá-cra vir-go Scho-lásti-ca in spé-ci-e co-



lúmbæ ad æ-the-ra to-ta festí-va perré-xit : hó-di-e



cæ-léstis vi-tæ gáudi-is cum fratre su-o me-ré-tur pérfru-



i in sempi-térnum.