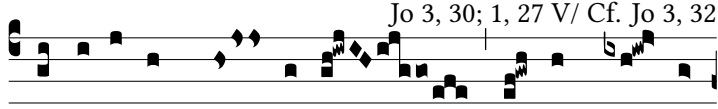
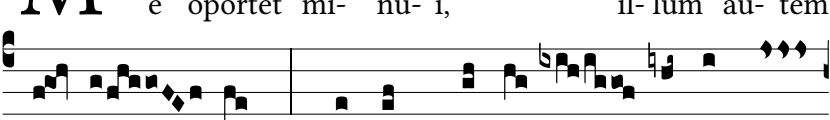
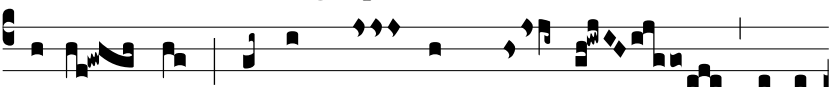


Resp.  
3.**M**

e opórtet mí- nu- i, il- lum au- tem



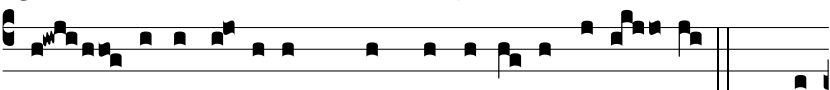
cré- sce- re; \* Qui post me ve- nit ante me



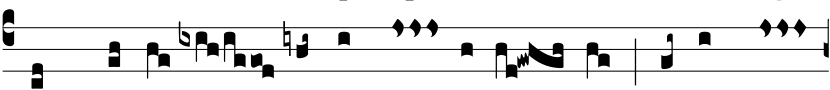
factus est, cu- jus non sum di- gnus corrí-



gi- am calci- amen- ti e- jus sólve- re. Ψ. Hoc



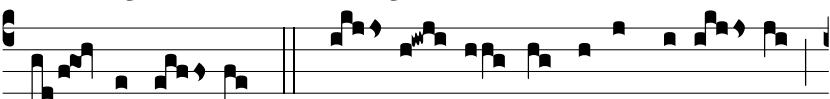
est testimó- ni- um quod perhí- bu- it Jo- án- nes. \* Qui



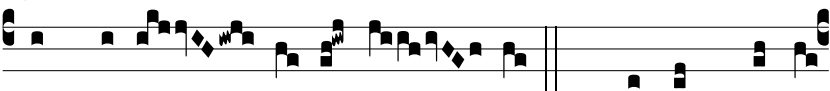
post me ve- nit ante me factus est, cu- jus non



sum di- gnus corrí- gi- am calci- amen- ti e-



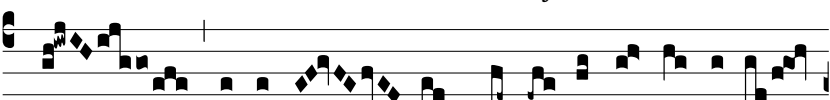
jus sólve- re. Ψ. Gló- ri- a Pa- tri, et Fí- li- o,



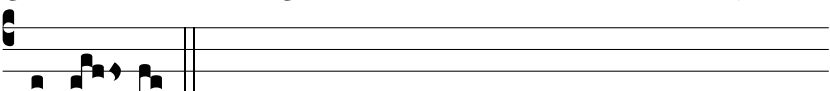
et Spi- rí- tu- i San- cto. \* Qui post me ve-



nit ante me factus est, cu- jus non sum di-



gnus corrí- gi- am calci- amen- ti e- jus



sólve- re.