

Resp.
3.

M

I-se-ri-córdi- am et ju-dí-ci- um cantábo ti- bi,



Dó-mi- ne : psal- lam et intél- li- gam * In vi- a



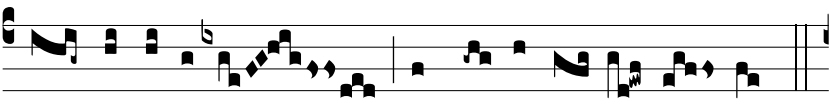
im-ma-cu-lá- ta, quando vé-ni- es ad me.



∩. Per-ambu-lá- bam in inno-cénti- a cordis me-



i, in mé-di- o domus meæ. * In vi- a



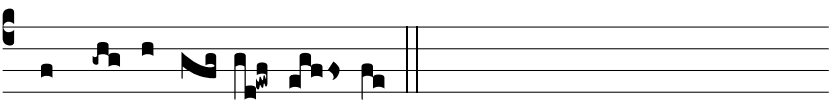
im-ma-cu-lá- ta, quando vé-ni- es ad me.



∩. Gló- ri- a Pa-tri, et Fí-li- o, et Spi-rí- tu-



i San- cto. * In vi- a im-ma-cu-lá- ta,



quando vé-ni- es ad me.