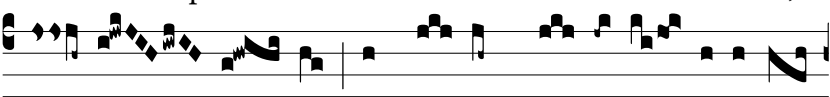


Resp.
8.



M

Utipli-cén-tur a Dómi-no anni tu- i,



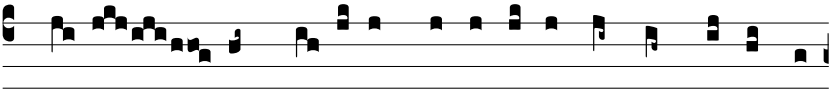
al- le- lú- ia! Per vi- am sa- pi- én- ti-æ in-



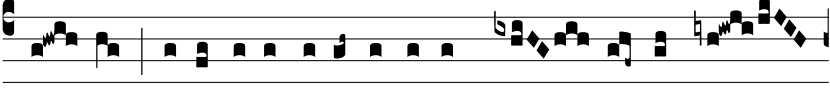
cé- das, * Et per sé- mi- tam justí- ti- æ re-



vertá- ris ad nos, al- le- lú- ia, alle- lú- ia.



ψ. So- la namque tenes princi- pá- tum in conspéctu Do-



mi- ni, propé- re- a revérte- re in thé- sau- ros tu-



os. * Et per sé- mi- tam justí- ti- æ rever-



tá- ris ad nos, al- le- lú- ia, alle- lú- ia. ψ. Gló-



ri- a Pa- tri, et Fí- li- o, et Spi- rí- tu- i



San- cto. * Et per sé- mi- tam justí- ti- æ



revertá- ris ad nos, al- le- lú- ia, alle- lú- ia.