

Resp. 5.

**A**



L-le- lú- ia ! Re- vért-e-re in thesáuros tu-



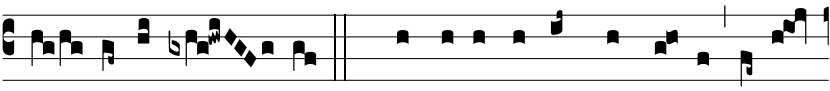
os ; \* Te bene- dí- cent ánge- li, alle- lú- ia, alle-



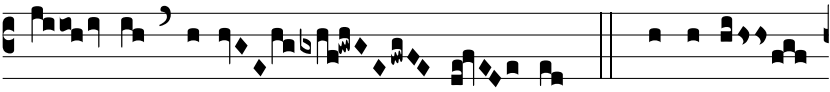
lú- ia.  $\Psi$ . So- la namque tenes princi- pá-



tum in conspéctu Dómi- ni, proptér- e- a revérte- re in



the- sáuros tu- os. \* Te bene- dí- cent ánge- li, alle-



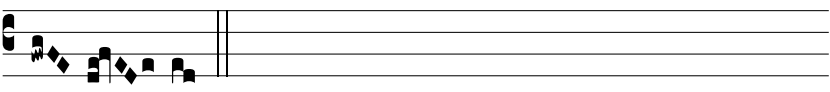
lú- ia, alle- lú- ia.  $\Psi$ . Gló- ri- a



Pá- tri, et Fí- li- o, et Spi- rí- tu- i Sán- cto. \*



Te bene- dí- cent ánge- li, alle- lú- ia, alle-



lú- ia.