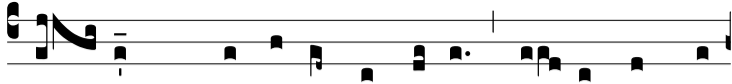


Ant.
8.



G

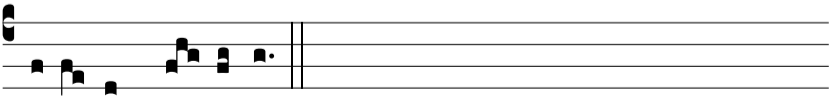
en- tem * Francó-rum ínclý-tam, si- mul cum re-



ge nó-bi-li, be- á-tus Remí-gi- us, sumpto cáe-li-tus chrís-



ma-te, sacro mundá-vit gúrgi-te, et Spí-ri-tus Sancti plene



di-tá-vit mú-ne-re.