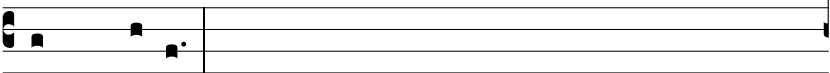


Ant.

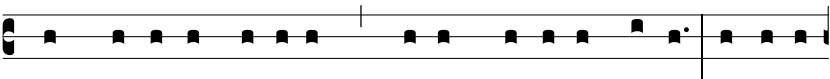


A

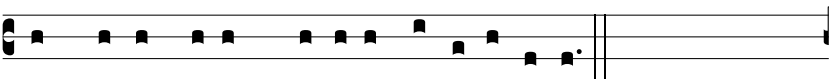
D-órna \* thá-lamum tu-um, Si-on, et súsci-pe Re-



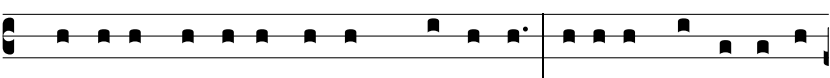
gem Christum:



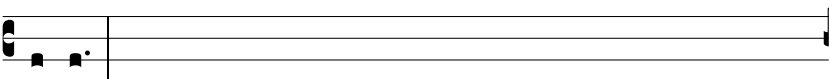
2. Amplécte-re Ma-rí-am, quæ est cæ-léstis porta: ipsa e-



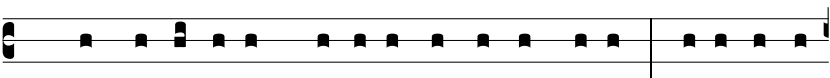
nim portat Regem gló-ri-æ no-vi lúmi-nis:



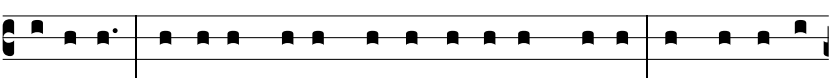
3. Subsístit Virgo addú-cens má-ni-bus Fí-li-um ante lu-cí-



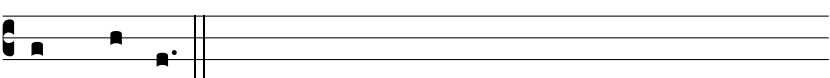
fe-rum:



4. Quem accí-pi-ens Síme-on in ulnas su-as prædi-cá-vit



pópu-lis Dóminum e-um esse vi-tæ et mortis, et Salva-tó-



rem mundi.