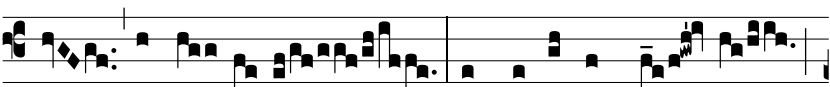




E-re

\* languó- res no- stros



ipse tu- lit,

et do- ló- res no- stros

ipse por- tá- vit.  $\Psi$ . Et nos

pu- tá-



vimus e- um qua- si lepró- sum

et percús-



sum a De- o, et humi- li- á- tum.

 $\Psi$ . Ipse

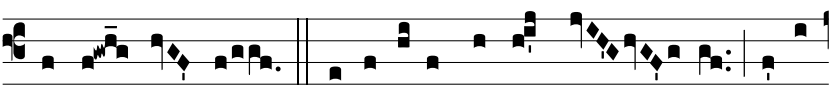
autem vulne- rá- tus est

propter in- iqui- tá-



tes no- stras,

attrí- tus est propter scé-

le- ra no- stra.  $\Psi$ . Disciplína pa- cis no- strae super

e- um : et livó- re e- jus



sa- ná- ti \* su-

mus.