



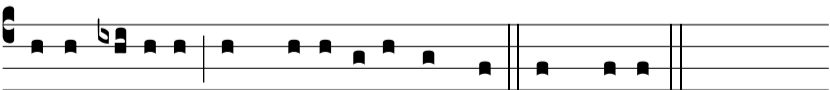
In manus tu-as, Dómi-ne, Comméndo spí-ri-tum me-um, *



Al-le-lú-ia, alle-lú-ia. In manus. Ψ . Redemísti me, Dómi-



ne, De-us ve-ri-tá-tis. * Al-le-lú-ia, alle-lú-ia. Gló-ri-a Pá-



tri, et Fí-li-o, et Spi-rí-tu-i Sáncto. In manus.