

Resp.

2.

R



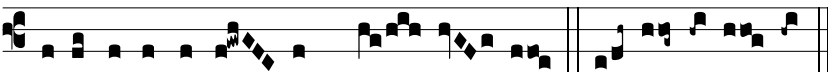
E-fúl- sit sol in clýpe-os áu-re-os, et resplendu-



é-runt mon- tes ab e- is ; * Et for-ti-tú- do gén-

ti- um dis-si- pá- ta est. Ψ . E- rat e-nim exérci-

tus magnus valde et for- tis, et appropi- á-vit Judas et



exérci-tus e-jus in præ- li- um. * Et for-ti-tú- do.