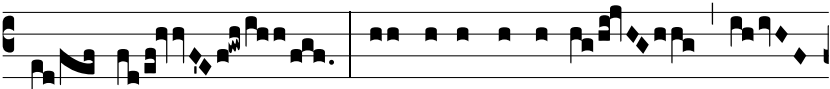


Grad.
2.

D



O-mi-ne, * re-fú- gi- um fa- ctus es



no- bis, a gene-ra-ti- ó-



ne et pro-gé-ni- e.



Ψ. Pri- úsquam mon-



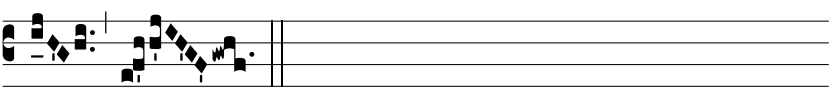
tes fí- e- rent, aut forma- ré- tur



ter- ra et orbis : a saé-



cu- lo, et in saé- cu- lum tu es * De-



us.