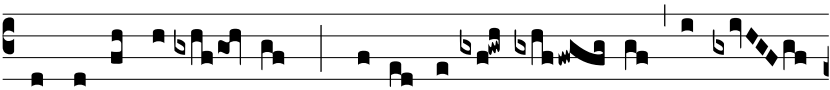


Resp.  
5.**M**

I-sit Dó- mi- nus Ange- lum suum, et



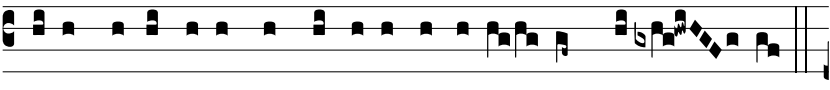
conclú- sit o- ra le- ó- num, \* Et non me



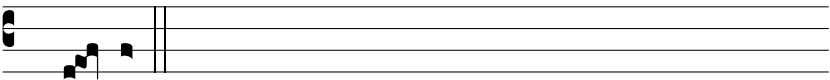
contami-na-vé- runt, qui- a co-ram e- o iu-stí-

ti- a invén- ta est in me.  $\Psi$ . Mi-sit De-us

mi-se-ri-córdi- am su- am et ve-ri-tá-tem su- am; á-nimam



me- am e-rí- pu- it de mé- di- o ca- tu- ló- rum le- ó- num.



\* Et non.