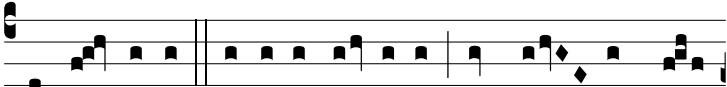


Resp.
8.

A



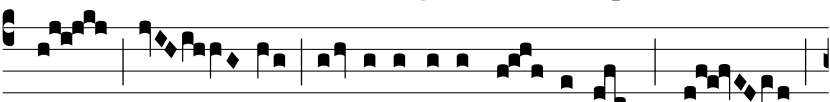
bscón-di-te e-le-emó-synam in si-nu páu-



pe-ris, et ipsa o-ra-bit pro vo-bis



ad Dó-minum. * Qui-a sic-ut aqua extín-



guit i-gnem, i-ta e-le-emó-syna



extin-guit pec-cá-tum. †. Da-te



e-le-emó-synam, di-cit Dó-mi-nus: et ec-ce ó-mni-a



mun-da sunt vo-bis. * Qui-a sic-ut.