

Resp.

2.
I



n co-lúmbæ spé- ci- e * Spí- ri- tus San-



ctus vi-sus est, Pa-tér- na vox au-dí-ta est : †



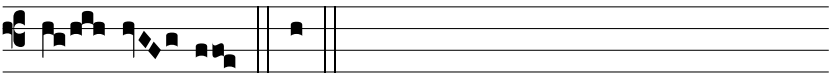
Hic est Fí-li- us me- us di-lé- ctus, in quo mi-hi be-



ne complá-cu- i i- psum au- dí- te. †



Cœ- li apérti sunt super e- um, et vox Patris in-



tó- nu- it. † Hic.