

Intr.

1.

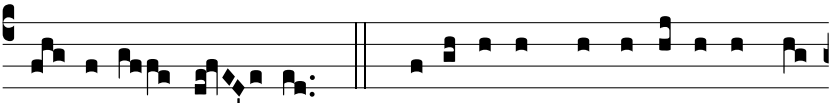
J



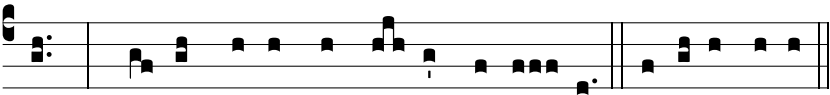
Ustus es * Dómi-ne, et rectum ju-dí-ci-um



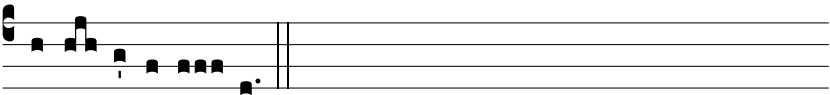
tu-um : fac cum ser-vo tu-o se-cúndum mi-se-ri-



cór-di-am tu-am. *Ps.* Be-á-ti imma-cu-lá-ti in vi-



a : * qui ámbu-lant in le-ge Dómi-ni. Gló-ri-a Patri.



E u o u a e.