

Grad.
3.

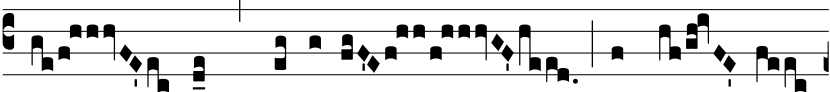
S



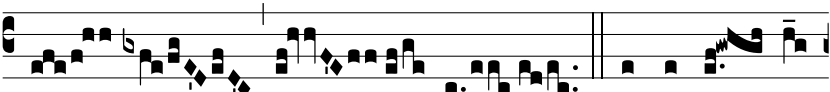
Pe-ci- ó-sus * for- ma



prae fí- li- is hó- mi-num : dif-fú-



sa est grá-ti- a in lá- bi-



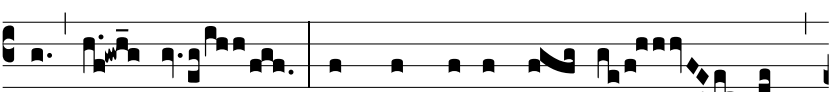
is tu- is. Ψ . E-ructá- vit



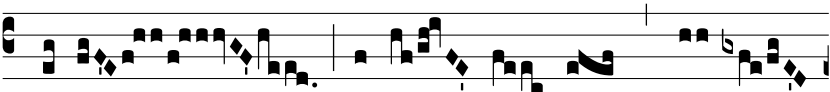
cor me- um ver- bum bo-



num : di-co e- go ó- pe-ra me-



a Re- gi : lingua me- a cá- la- mus



scribae ve-ló- ci- ter * scri- bén-



tis.