

Comm.

4.

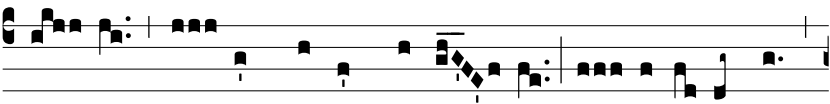
J



E-rú-sa-lem, * quae ae-di-fi-cá-tur ut cí-vi-tas,



cu-jus parti-ci-pá-ti-o e-jus in i-dípsum: illuc e- nim ascen-



dé- runt tri- bus, tri-bus Dómi- ni, ad confi-téndum



nómi-ni tu- o, Dómi- ne.