

Tract.  
8.

V



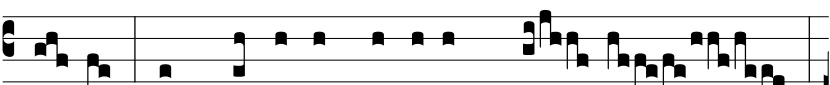
INE- A \* fac-ta est di- léc- to



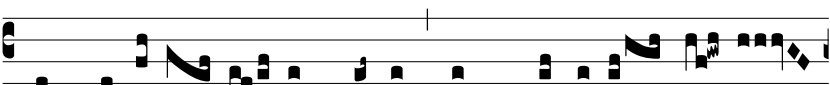
in cornu, in loco ú- be- ri. ∇.



Et ma-cé- ri- am circúmde-dit, et circumfó-



dit: et plantá-vit ví-ne- am So- rec,



et aedi-fi- cá- vit turrim in mé-di- o e- jus.



∇. Et tórcu-lar fo-dit in e- a:



ví-ne- a e- nim Dómi-ni Sá- ba- oth, do-



mus \* Is- ra- el est.

