

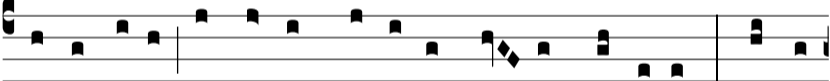
Ant.  
3 a2.



Quando na-tus es \* i-nef-fa-bí-li-ter ex Vír-gi-ne,



tunc implé-tæ sunt Scriptú-ræ: sic-ut plú-vi-a in vellus



descendísti, ut sal-vum fá-ce-res ge-nus hu-má-num. Te lau-



dá-mus, De-us nos-ter. E u o u a e.