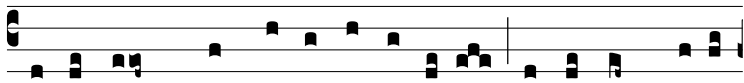


Ant.
8 g.

E



c-ce nunc * tempus acceptá-bi-le, ecce nunc di-es



sa-lú-tis; in his ergo di-é-bus exhi-be-ámus nos sic-ut



De-i mi-nístros, in multa pa-ti-én-ti-a, in vi-gí-li-is, in



ie-iúni-is, et in ca-ri-tá-te non ficta. E u o u a e.