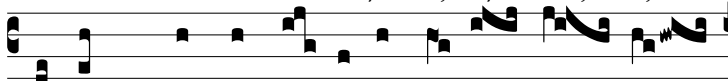


Resp.

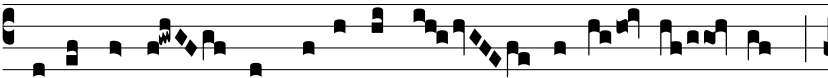
5.  
J



o-seph\* dum intrá- ret in terram Æ- gýp-



ti, linguam quam non no- vit, au- dí- vit:



manus e- jus in labó- ri- bus servi- é- runt:



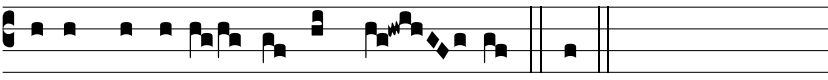
† Et lingua e- jus inter prínci- pes loque- bá- tur sa-



pi- én- ti- am. *Ψ* Humi- li- avé- runt in compé- di-



bus pedes e- jus: ferrum pertránsi- it á- nimam e- jus,



donec ve- ní- ret verbum e- jus. † Et.