

Resp.

8.

M



ontes

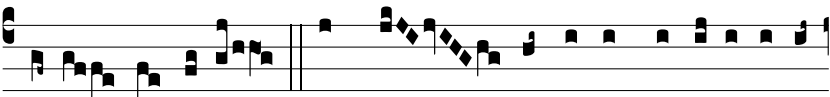
\* Gélbo-ë,

nec ros nec plú-vi-



a vé-ni-ant su- per

vos, † Ubi ce-ci-dé- runt



fortes Is-ra-ël.

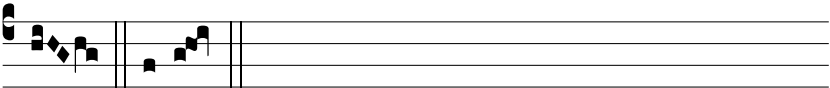
Ψ Omnes

montes in circú- i-tu e-



jus, vi-si- tet Dómi- nus;

a Gélbo- ë tránse-



at.

† Ubi.