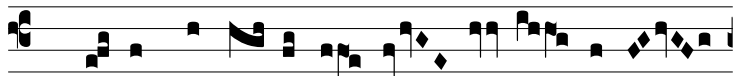


Resp.

2.
S

i bo-na* suscé- pimus de ma- nu Dómi-



ni, ma-la au- tem qua-re non su- stin-e á-



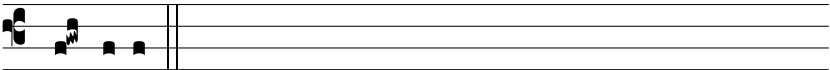
mus? † Dó-minus de-dit, Dó-minus ábstu-lit; si-cut Dómi-



no plá-cu-it, i-ta factum est sit nomen Dó- mi-

ni be-ne- dí- ctum. V^l Nu- dus egréssus sum de ú-te-

ro matris me- æ et nudus re- vértar il- luc.



† Dó-minus.