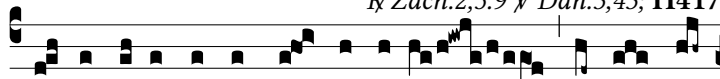


Resp.  
8.**M**

uruo tu-o\* in-expu-gná-bi-li

circum-cín-



ge nos,

Dómi-

ne,

et ar-mis tu-æ po-tén ti-



æ pró- te-ge nos

sem-per: † Lí-be-ra,

Dómi-ne, De-

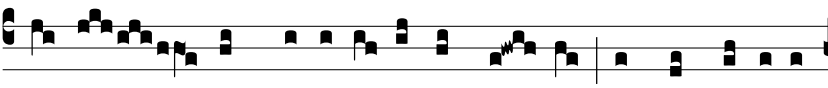


us Is- ra-ël,

clamán- tes

ad

te. † E-ru-



e nos

in mi-ra-bí- li-bus tu-

is, et da gló-ri-am



nó- mi- ni tu-

o.

† Lí-be-ra.