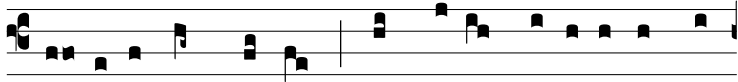


Ant.
2 d.

V



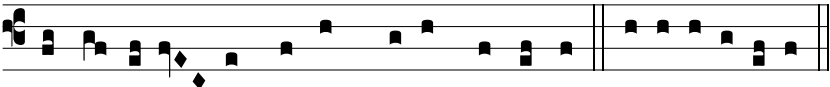
os estis lux mundi. * Non po-test cí-vi-tas abscón-



di supra montem pó-si-ta; neque accéndunt lu-cérnam



et ponunt e- am sub mó- di- o, sed super cande-lábrum,



ut lú-ce-at ómni-bus qui in domo sunt. E u o u a e.