

Resp.

7.

V



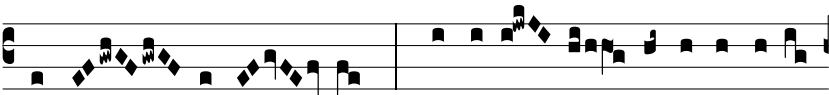
érbe-ra carní-fi-cum non \* timu-é-runt



San-cti De-i, mo-ri-éntes pro Chri-sti



nó-mi-ne: † Ut hæré-des fí-e-rent in



domo Dómi-ni. ♯ Tra-di-dé-runt córpora su-a



ad supplí-ci-a prop-ter Dó-mi-num. † Ut.