

Comm.

2.



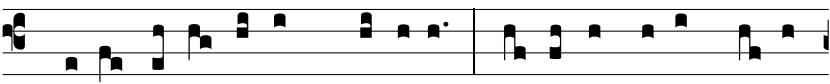
E- rú- sa- lem * surge, et sta in excélso: et



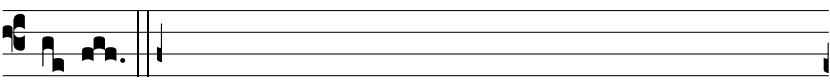
vi- de iu- cun- di- tá- tem, quae vé- ni- et ti-



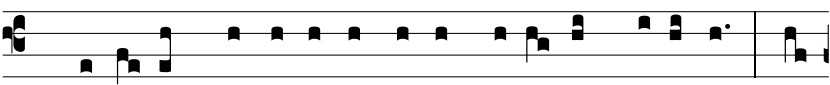
bi a De- o tu- o.



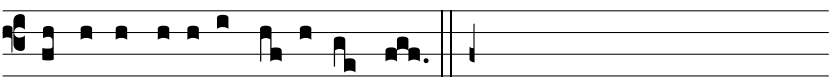
1. Lauda, Ie- rú- sa- lem, Dóminum; colláuda De- um tu- um,



Si- on. *A.*



2. Quó- ni- am confortá- vit se- ras portá- rum tu- á- rum, be-



ne- dí- xit fi- li- is tu- is in te. *A.*