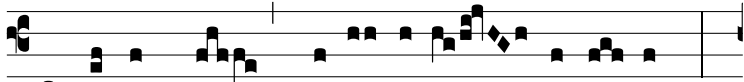
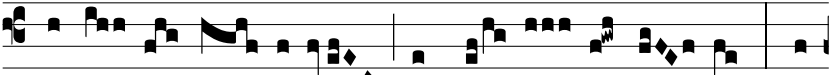


Intr.  
2.



**L**

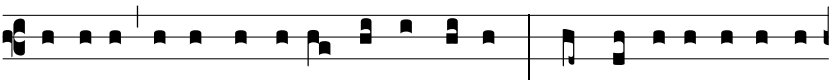
AETÉTUR cor \* quaerén-ti-um Dómi- num:



quaé-ri- te Dó- minum, et con- fir- má-mi- ni: quaé-



ri- te fá- ci- em e- jus semper. *Ps.* Confi- témi- ni



Dómino, et invo- cá- te nomen e- jus: \* annunti- á- te inter



gentes ó- pe- ra e- jus. Gló- ri- a Patri. E u o u a e.