

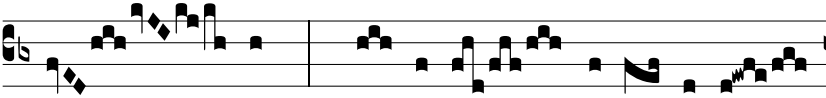
Resp.

5.

C



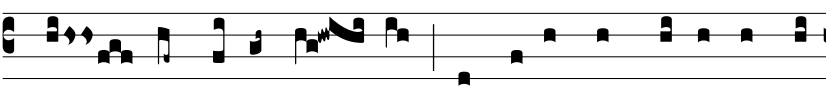
on-fi-te- á-mur* nó- mi-ni tu- o ma-



gno, † Quó- ni- am terri- bi- le



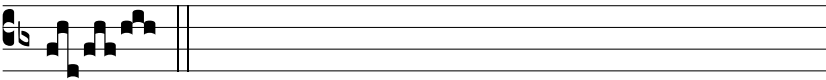
et sanctum est. *Ψ* Hi in cúrrí-



bus, et hi in e- quis, nos autem in nómi-ne Dó-



mi-ni, De- i nostri, in vo-cá-bi- mus. † Quó- ni-



am