

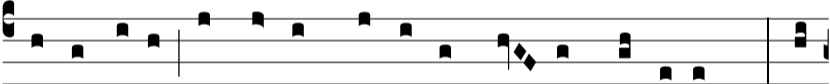
Ant.
3 a2.



Quando na-tus es * i-nef-fa-bí-li-ter ex Vírgi-ne,



tunc implé-tæ sunt Scriptú-ræ: sic ut plú-vi-a in vellus



descendísti, ut salvum fá-ce-res ge-nus humá-num. Te



laudámus, De-us noster. E u o u a e.