

Resp.

7.

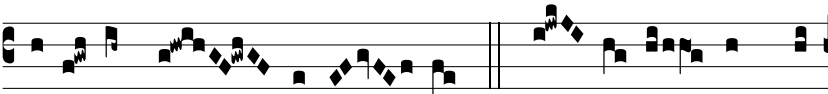
M



anus e- jus * torná- ti-les, clavó-rum cúspi-



de te-re- brá- tæ, † Humánæ sa-lú-tis pré- ti- o qua-si



hy- a- cínthis re-fér- tæ. V̇. Cór- nu- a in má-



ni-bus e-jus: abscóndi-ta est for-ti-túdo e- jus: sunt e-



nim ma-nus e- jus. † Humanæ.