

Resp.

2.
S

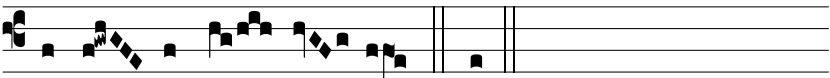
i-ne ta- ctu pu- dó- ris invénta es



Ma-ter Salva- tó- ris: † Qui coe-lum terrámque re-



git, in tu-a se clau-sit víscera factus ho-

mo. *Ψ*. Bene-dí- cta tu in mu-li- é-ri- bus, et bene-díctus

fructus ventris tu- i. † Qui.