

Resp.

7.
S



t- tit Ange- lus* super a- ram



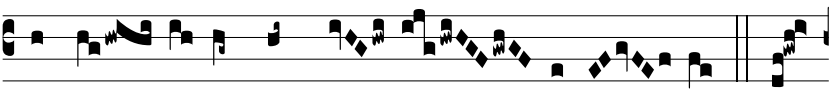
templi, habens thu- rí- bu- lum áure-um in manu su-



a, et da- ta sunt e- i in- cénsa multa: † Et



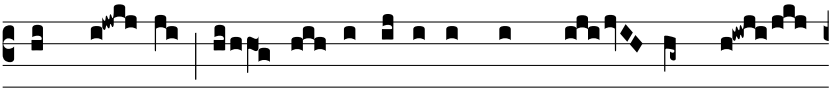
ascén- dit fu- mus a- ró- ma- tum de manu



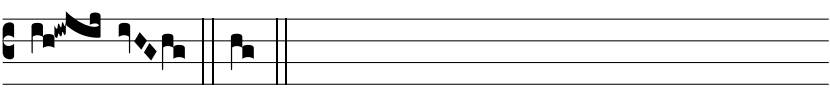
Ange- li in conspé- ctu Dómi- ni. *t.p.* Al-



le- lú- ja. *Ψ* In conspé- ctu Ange- ló- rum psal-



lam ti- bi: et ad- o- rábo ad templum sanctum



tu- um. † Et.