

Ant.  
8.

A



n- ge- le De- i, \* qui cu- stos es me-



i, me ti- bi comissi- o pi- e- ta- te superna, ho-



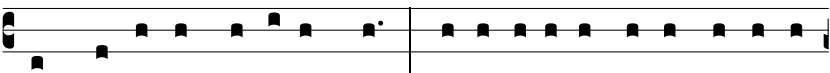
di- e il- lu- mi- na, custo- di,



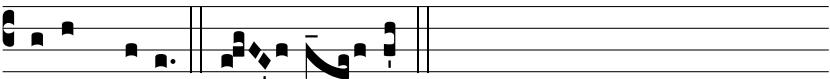
re- ge et guber- na. Ange- lis su- is mandá-



vit de te: \* ut custó- di- ant te in ómni- bus vi- is tu- is.



In má- ni- bus portábunt te: \* ne forte offéndas ad lá- pi- dem



pedem tu- um. An- ge- le