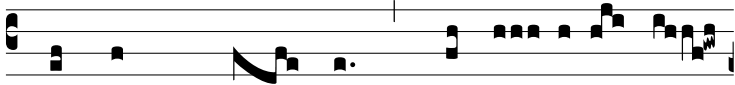


Intr.  
7.

S



IGNUM ma- gnum \* appá- ru- it in



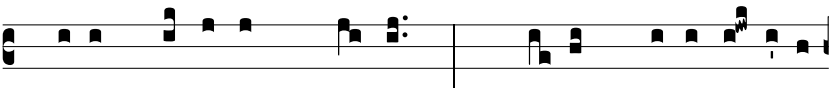
cae- lo: mú- li- er amícta so- le, et lu- na



sub pé- di- bus e- jus, et in cá- pi- te e- jus



co- róna stellá- rum du- óde- cim. *Ps.* Can- tá- te Dó-



mino cánti- cum no- vum: \* qui- a mi- ra- bí- li- a



fe- cit. Gló- ri- a Pa- tri. E u o u a e.